

MUTIARA LAKE

PUCHONG

THE BEST LAKEFRONT LIVING IN PUCHONG

Come Home to Serenity

Reimagine family homes at Mutiara Lake Puchong, a 34-storey lakefront condominium that offers tranquil, fulfilled living for all. Nestled in a serene yet strategic address, this modern residence invites you to start each day in peaceful bliss.

Rise to unobstructed scenic views, experience the joys of a lakeside lifestyle, and cherish every moment with your loved ones.



Family-sized layouts
1,022 sq.ft. - 1,345 sq.ft.



Strategically located
in Puchong Town Centre



Walking distance
to Pusat Bandar Puchong
LRT Station (1km)



Shuttle service
to LRT station and
Pavilion Bukit Jalil



Residential-titled
condominium



Low density
526 units only



Over 28
family-orientated
facilities



Provisional
GreenRE Certification
Residential Category

Family Living

At Its Best



Mutiara Lake Puchong redefines urban multigenerational living with family-orientated facilities and multi-tier security set in a calm, picturesque atmosphere. This is a home where bonds deepen, roots run strong, and the comforts of togetherness make every day worthwhile.



Artist's Impression



Artist's Impression

Take a midday dip or enjoy some poolside family time at the Swimming Pool.

Designed
For Families,
Made For Living

Make each quality time count with the family-orientated facilities at Mutiara Lake Puchong. From dedicated green areas for outdoor camping to thoughtfully crafted wellness zones, there's a vibrant space to forge deeper bonds with every member of the family.

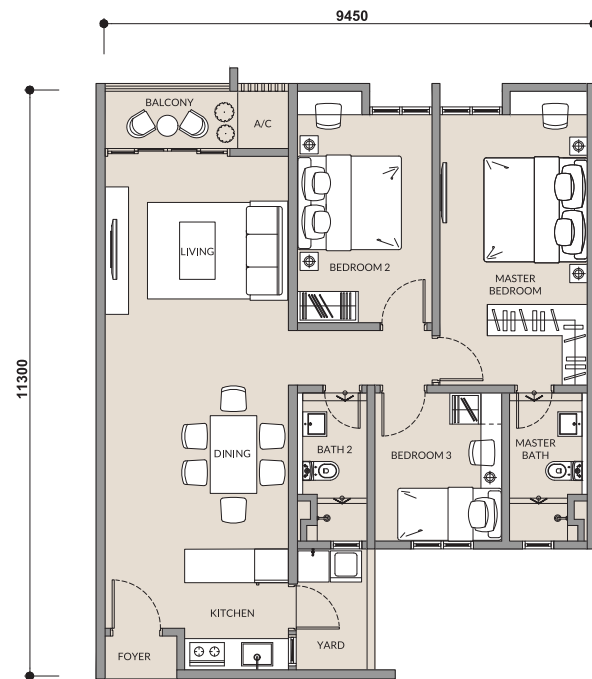


Artist's Impression

Spacious layouts where every generation feels at home.

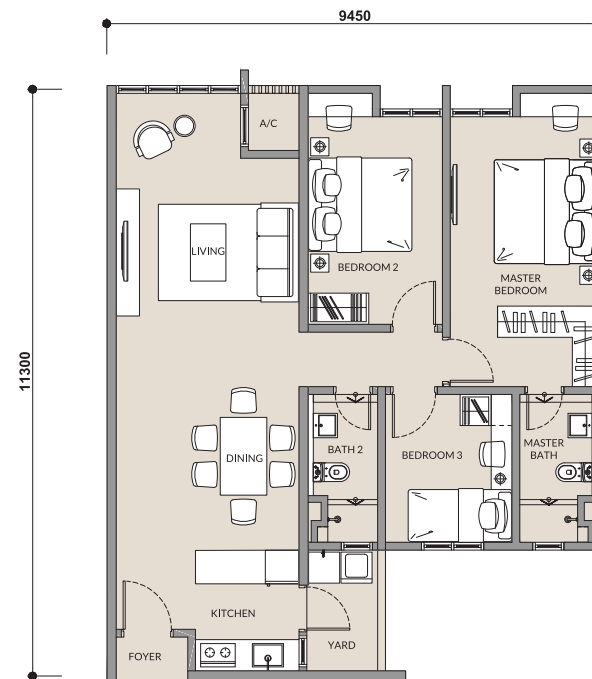
Type A1 | 1,022 sq.ft.
(95 sq.m.)

3 Bedrooms 2 Baths 2 Car Parks



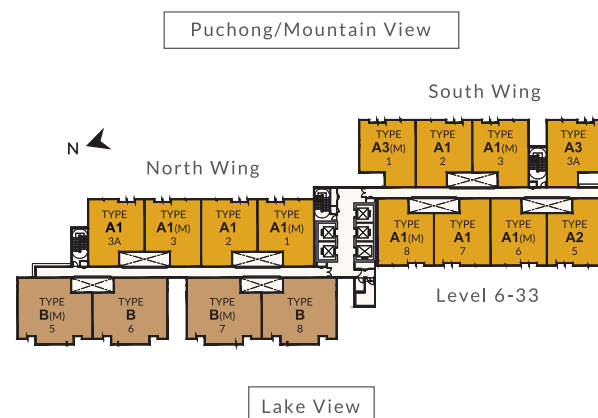
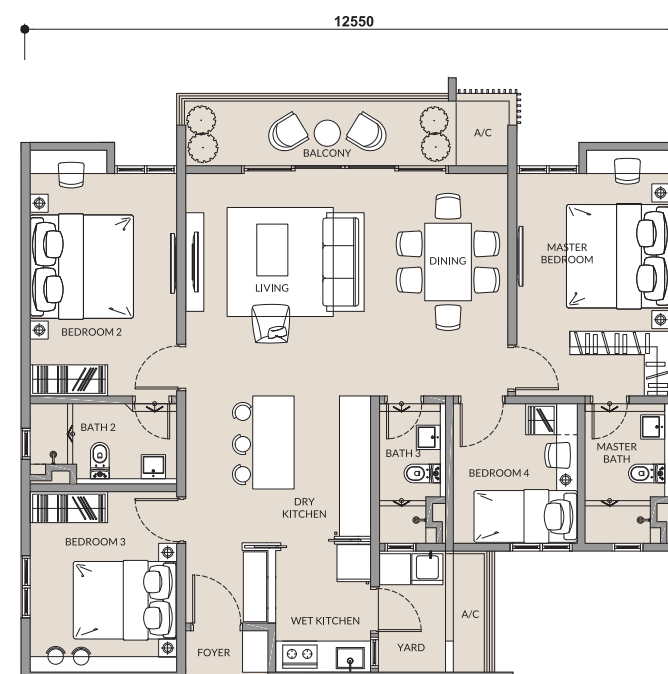
Type A4 | 1,022 sq.ft.
(95 sq.m.)

3 Bedrooms 2 Baths 2 Car Parks



Type B | 1,345 sq.ft.
(125 sq.m.)

4 Bedrooms 3 Baths 3 Car Parks



Type A1/A2 : Level 2-33A

Type A3 : Level 6-33A

Type A4/A5 : Level 2-5

Type B : Level 2-33

Sky Villa: Level 33A

Strategically Located in Puchong Town Centre



SHOPPING

Lotus's Puchong	- 1.4km
SetiaWalk Mall	- 2.4km
IOI Mall Puchong	- 3.4km
Sunway Pyramid	- 7.4km
Pavilion Bukit Jalil	- 9.2km

MEDICAL CENTRE

KPMC Puchong Specialist Centre	- 2.4km
Columbia Asia Hospital Puchong	- 2.4km
Sunway Medical Centre	- 6.0km

SCHOOL

SJK (C) Poi Min	- 2.5km
SJK (C) Kheng Chee	- 4.3km
Binary University	- 4.6km
SJK (C) Shin Cheng (Harcroft)	- 5.3km
Sunway University	- 6.8km
Monash University	- 7.0km
Taylor's University Lakeside Campus	- 8.3km

RECREATIONAL

Taman Wawasan Recreational Park	- 3.6km
Sunway Lagoon	- 7.1km

PUBLIC TRANSPORT

LRT Pusat Bandar Puchong	- 1.0km
LRT Taman Perindustrian Puchong	- 1.4km

OPEN FOR REGISTRATION



Mutiara Lake Sales Gallery

No. 9,11,13 & 15, Jalan TMP 11, Taman Mutiara Puchong,
47160 Puchong, Selangor Darul Ehsan.
Open daily | 10:00am – 6:00pm

1700 82 5300
mutiaralake.com.my



Disclaimer: This information contained herein is subject to change and cannot form part of an offer or contract. All renderings are artist's impression only. All measurements are approximates. While every reasonable care has been taken in providing the contained, the developer cannot be held responsible for any inaccuracy. All the above items are subject to variations, modifications and substitutions as may be required by the Authorities or recommended by the Architect or Engineer.

Scan to visit
our website



Malton Berhad

malton.com.my



MALTON